



**20 Benson Court Harston Drive, Enfield Highway  
Offers In The Region Of £240,000 Leasehold**



# 20 Benson Court Harston Drive, Enfield Highway

186 Hertford Road, Enfield Highway,  
Middlesex, EN3 5AZ

020 8805 5959  
[www.kings-group.net](http://www.kings-group.net)

- One Bedroom Flat
- Grade II Listed
- Communal Grounds, Gardens & Parking
- High Ceilings & Character Features
- Long Lease
- Situated Within the Sought After Enfield Island Village
- Close Proximity to local shops & amenities
- Great access into Tottenham Hale & London Liverpool Street

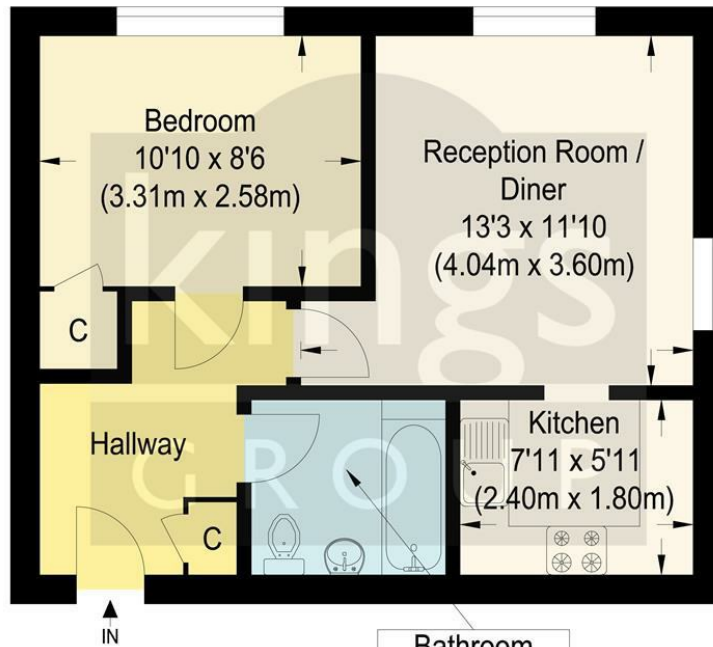
Service charge £1780  
Estate fee - £300PA  
Ground Rent - £0  
Water - Included  
Building Insurance - £420PA (approx)

KINGS GROUP is thrilled to present this charming ONE BEDROOM flat located in the highly desirable ENFIELD ISLAND VILLAGE. This beautiful property, nestled in the historic Harston Drive, offers a rare opportunity to own a piece of history as it is a grade II listed flat with character features such as high ceilings.

The location of this flat is truly unbeatable, being in close proximity to all local shops and amenities, as well as the convenient Enfield Lock Train Station providing direct access to Tottenham Hale and London Liverpool Street. Whether you are looking for a cozy home or a lucrative buy-to-let investment, this property ticks all the boxes.

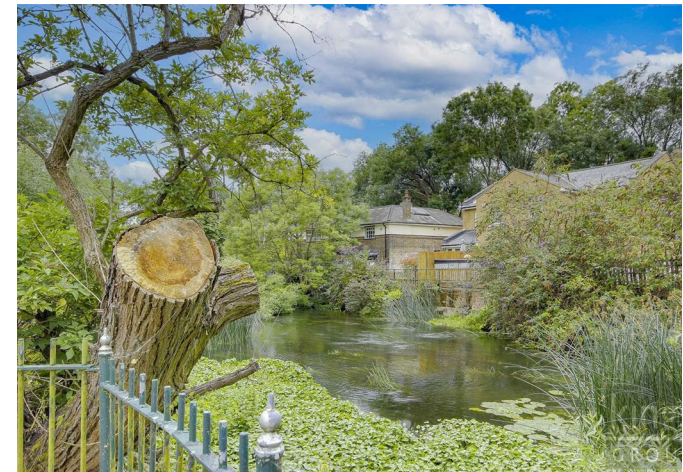
Step inside to discover a modern fitted kitchen, a stylish three-piece bathroom, a spacious lounge, and a comfortable bedroom. The communal grounds, gardens, and parking add to the appeal of this wonderful property, making it a perfect place to call home.

Don't miss out on the opportunity to own this well-maintained gem in Enfield. Contact Kings Group today to arrange a viewing and make this flat your own!

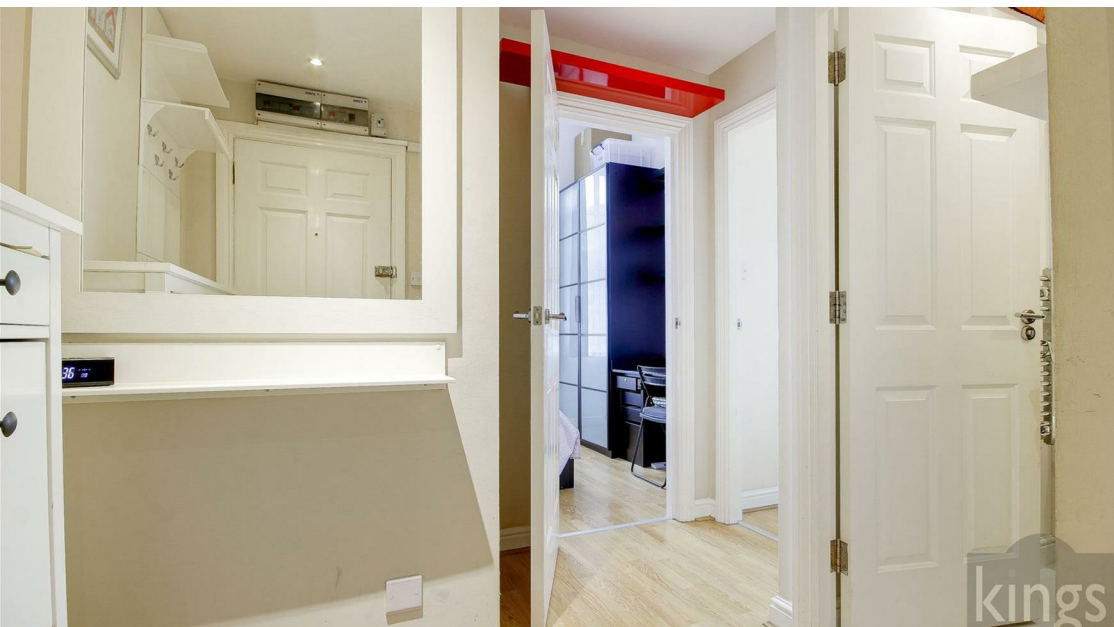


### Benson Court, EN3

Approximate Gross Internal Floor Area : 37.40 sq m / 402.57 sq ft  
 Illustration for identification purposes only, measurements are approximate, not to scale.



THE PROPERTY MISDESCRIPTIONS ACT 1991. The agent has not tested any apparatus, equipment, fixtures or services and so cannot verify that they are in working order, or fit for the purpose. References to the Tenure of a property are based on information supplied by the vendor. The agent has not had sight of the Title documents. A buyer is advised to obtain verification from their Solicitor or Surveyor



186 Hertford Road, Enfield Highway,  
Middlesex, EN3 5AZ

020 8805 5959

[www.kings-group.net](http://www.kings-group.net)



[Zoopla.co.uk](http://Zoopla.co.uk)



[rightmove.co.uk](http://rightmove.co.uk)  
The UK's number one property website

